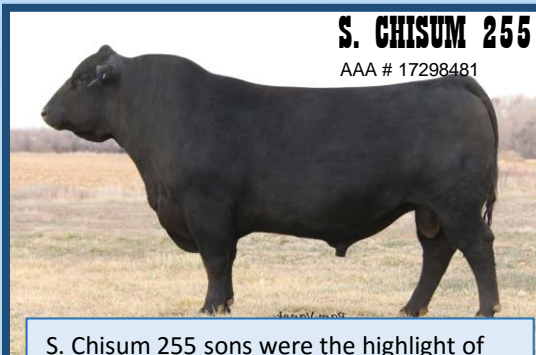


# JC HEIKEN ANGUS & SONS

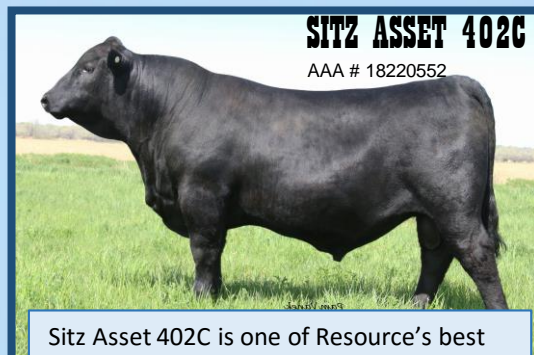
10<sup>th</sup> Annual Production Sale – February 28, 2017  
Miles City Livestock Commission, Miles City Montana



**S. CHISUM 255**  
AAA # 17298481

CED	+16
BW	-8
WW	+60
YW	+103
SC	+1.05
MARB	+36
RE	+81
\$B	161.40

S. Chisum 255 sons were the highlight of our 2016 sale. 255 sires heavy muscled, low birth weight sons that will add value to your herd. His feminine daughters are deep and thick.



**SITZ ASSET 402C**  
AAA # 18220552

CED	+4
BW	+2.2
WW	+67
YW	+129
SC	+1.02
MARB	+16
RE	+89
\$B	162.69

Sitz Asset 402C is one of Resource's best sons to date. This larger framed bull will add performance and style. Watch for his sons in our 2018 sale.



**LT REGIONS 4110**  
AAA # 18019670

CED	+10
BW	+4
WW	+57
YW	+94
SC	+63
MARB	+21
RE	+53
\$B	124.02

LT Regions 4110 sired an outstanding set of calves; they look to have lots of muscle, but still had moderate birthweights. This docile sire has tremendous shape, a big hip, straight back and exceptional feet. We are extremely excited about his progeny.



**SITZ INVESTMENT 689B**  
AAA # 17758556

CED	+8
BW	+5
WW	+78
YW	+143
SC	+1.39
MARB	+60
RE	+77
\$B	164.78

Sitz Investment 689B is a growth bull in every sense of the word. He will add frame and pounds to your calf crop.



**SITZ LOGO 12964**  
AAA # 17746620

CED	+10
BW	-1.3
WW	+65
YW	+102
SC	+2.22
MARB	+43
RE	+42
\$B	102.82

Sitz Logo 12964 was the sensation of the 2015 fall sale season. This big butted bull will add muscle and fleshing ability, while maintaining calving ease. He saw heavy use in our herd, especially on the heifers.

Look for his calves in our 2018 sale!



## BETTER bulls .... more MUSCLE

John (406)855-7839 Brian (406)861-3151 Ben (406)860-7331 Joe (406)861-1020

[www.JCHeikenAngusAndSons.com](http://www.JCHeikenAngusAndSons.com)

